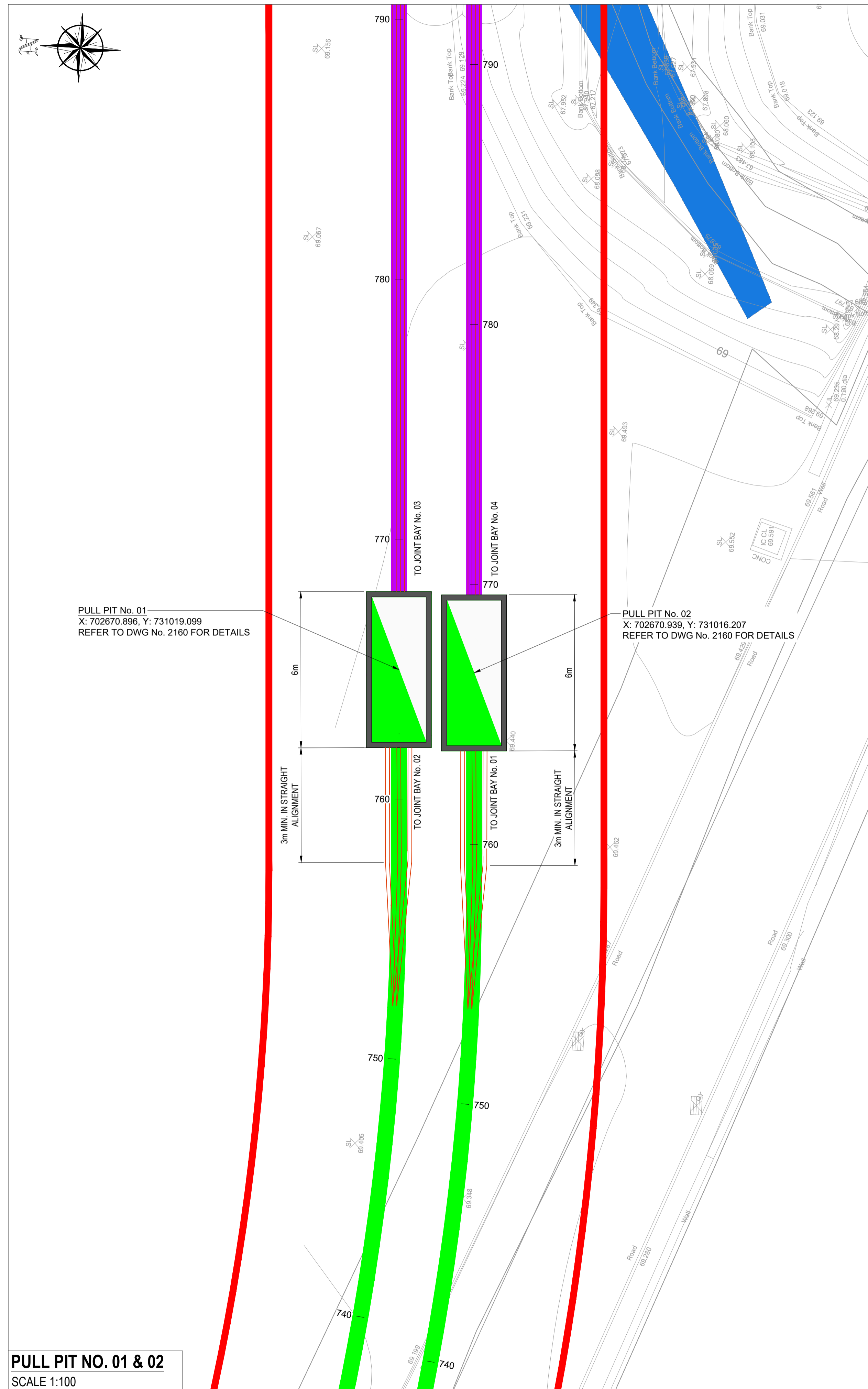
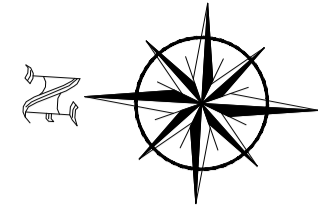


JOINT BAY NO. 01 & 02
SCALE 1:100

PLAN 1

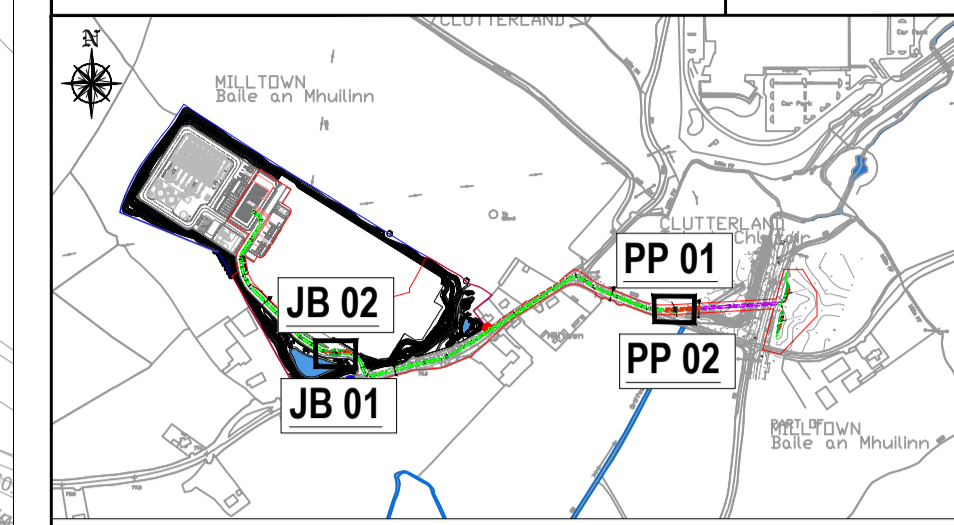


PULL PIT NO. 01 & 02
SCALE 1:100

PLAN 2

DRAWING IS PRODUCED USING THE IRISH TRANSVERSE MERCATOR (ITM) GEOGRAPHIC COORDINATE SYSTEM

A1



KEYPLAN
N.T.S

- LEGEND:**
- PLANNING BOUNDARY
 - PROPOSED 110KV GRID CONNECTION
 - PROPOSED HDD (HORIZONTAL DIRECTIONAL DRILL)
 - 110KV DUCT SDR 11 HDPE
 - COMMS DUCT SDR 17.6 HDPE
 - EXISTING GRIFFEEN RIVER

Rev	Description	Drawn	Checked	Date
P02	ISSUE FOR PLANNING	DW	LP	15.03.21
P01	FOR INFORMATION	DW	LP	10.03.21

Clifton Scannell Emerson Associates
Clifton Scannell Emerson Associates Limited
Consulting Engineers,
Seafor Lodge,
Castledawson Avenue,
Blackrock, Co. Dublin,
Ireland, A94 P768
T: +353 1 288 5006
F: +353 1 283 3466
E: info@csea.ie
W: www.csea.ie

DATA & POWER HUB SERVICES LTD	
Client	
Project SITE R120	
Dwg. Title PROPOSED JOINT BAYS & PULL PITS JB01 JB02 & PP01 PP02	
Drawn By DW	Date MAR 2021
Checked By RG	Scale 1:100 @ A1
Project Code Originator Zone/Phase Level Type Role Dwg. No.	
20_147 - CSE - GEN - XX - DR - C - 2126	

S2	FOR INFORMATION
Status Code	Suitability Description
P02	PLANNING
Revision	Project Status